

SIMP-SON's Welcome Event 24/25 WiSe



25th October 2024

Agenda

Who is SIMP-SON?

About Magdeburg

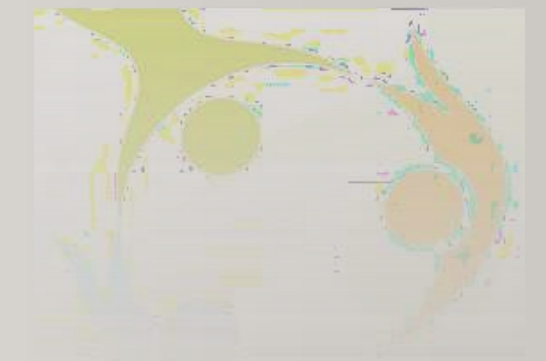
Living in Germany

OVGU `Survival Kit`

SIMP-SON Events`



What is SIMP-SON?



**Students' International Mentoring Program
Social Organizational Network**

What we do



We offer a **mentoring Buddy program** with higher-semester German & International students

We **provide cultural information** and networking opportunities for students

Our mission is to **help all ISP students** feel welcome and have a smooth transition





Szymon, IMME
SIMP-SON Coordinator



Grit Voigt
Office of International Affairs & ISP
Coordinator



Alina, IBE
SIMP-SON Coordinator

SIMP-SON Team

Contacts

ISP Office in **Building 22, Room B-006**

Counseling hours: Tuesdays: 10:00-11:30 + 14:00-15:00 Thursday 11:30-13:00

Email: isp@ovgu.de

Instagram: @ispofficeovgu



INFO



About Magdeburg



Magdeburg

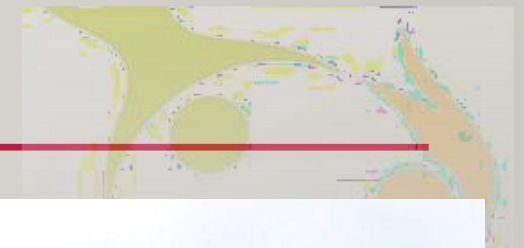


https://en.wikipedia.org/wiki/Magdeburg#/media/File:Vista_Magdeburg.jpg



Location: Saxony Anhalt Population: ~ 240,000 Students: Elbe, 2,000, unique architecture

Public Transport in MD



-Tram and bus stations next to university: Universität, Universitätsbibliothek, Ackerischer Platz

Online: insa.de/bin/query.exe/dn

Also available: INSA App (Google Play, App Store)

Schedules change for weekends, holidays, and at nights after 11:00

Be aware of constantly changing routes and times due to construction



<https://www.magdeburger-news.de/site/mdn/home/news/2017/06/13/143651/portrait/Tram-LED.jpg>

TranSIT in MD



Buses & Trams

Valid Deutschland-Ticket



Bicycle

(E-Rollers)

(Lock it well – often stolen!)

MIND THE BIKE LANES

and traffic rules!



WALKING

Most places can be reached easily by walking

Shopping in MD



Malls: Allee-Center, City Carré, Flora Park, etc



IMPORTANT: Sundays - closed



Supermarkets usually open from 8:00 am to 8:00 pm
Some of them 10:00 pm



Small 'Spätshops' (Späti) at Uni etc.

Having fun in MD

Campus - Unitheke, Moonlight, Festung Mark

Hasselbachplatz - bars and cafes like Hyde, Stern Bar

SIMP-SON - trips and events for ISP students

IKUS - OVGU's international student club www.ikus.ovgu.de/

Theatre, museums, cinema, clubs (Kunstkantine, Insel, Datsche...)



Sports in MD

How to meet people in Germany?

+ CLUBS! (Vereine)

+ Volunteer Initiatives!



Low-cost sports activities for students **at university**:
www.spoz.ovgu.de
(registration via uni-account)

Private gyms e.g. Easy Fitness, McFit, ElbeFitness, Elbeschwimmhalle, dance school, football clubs

Safety in MD

SOS:
<https://www.grs.ovgu.de/SOS.html>



Is it safe to walk in Magdeburg at night, alone? – Safety precautions

Doctor's Appointments (find English speaking Doctors)

Make an appointment in advance – not urgent

Sprechstunden - show up when the office opens

Emergency numbers:

Police (110)

Fire department and ambulance (112) – urgent cases only

Further details for
medical assistance:





<https://www.doatrip.de/en/germany/saxony-anhalt/magdeburg/magdeburg-christmas-market.html>



<https://www.magdeburg.de/Start/Bürger-Stadt/Stadt/Sehenswürdigkeiten/index.php?La=1&NavID=37.445&object=tx|37.6876.1&ModID=9&FID=115.350.1>



<https://www.travelcircus.de/urlaubsziele/magdeburg-sehenswuerdigkeiten/>

Living in Germany



General INFO



Student visa holders are **not allowed** to earn more than 538 €/month and work more than 20h/week

Liability insurance is highly recommended – insuring self-induced harm (Privathaftpflicht)

Household insurance (fees depend on insurable value and location) may protect your valuable goods in case of break-ins, etc. (Hausratsversicherung)

Job Search



Job Websites – Stepstone, Indeed, Jobble etc

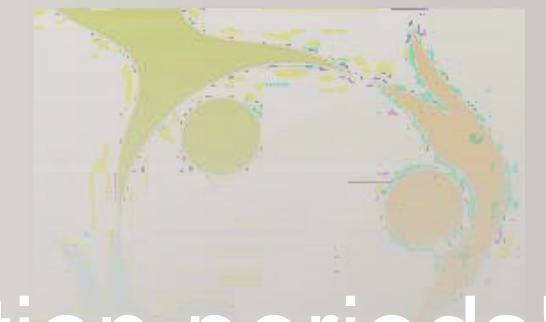
Job Fair (Jobmesse) – 26th October at Festung Mark

<https://jobmesse-magdeburg.de/>

OVGU Career Service -

<https://www.ovgu.de/careerservice.html>

LEGALITIES



IMPORTANT: Mind the...

duration of contracts (cell phone, internet, gym etc.) and cancellation periods!

IMPORTANT: MAKE COPIES OF ALL DOCUMENTS AND KEEP PAPER RECORD

BROADCASTING INTERNET & TV TAX - GEZ



German broadcasting and television fee are to be paid as a lump-sum fee per apartment. The fee amounts to **18,36€** per month!

Fee may be paid monthly, quarterly or yearly – you choose!

Recycling in Germany



Yellow bin:

Metal, plastic, packages, cosmetic/detergent boxes, cartons with metal/plastic sheet (milk cartons), foams

Brown bin:

Food waste including meat and bones, flower waste, hair, feathers

Blue bin:

Paper, newspapers, carton boxes, flyers, egg cartons

Glass containers:

Glass bottles and jars (no dishes, drinking glasses, porcelain, light bulbs)

Black bin:

Everything else



Disposing your waste wrongly will risk a penalty!

Living in Germany



German language - do not hesitate to show off your German skills

Mind people's privacy

Don't be too shy – get contact

Make friends from everywhere, possible  our studies

German culture: Christmas markets, Oktoberfest, Easter, Flohmärkte

Living in Germany



Deutschland-Ticket



- Everything except ICE, IC, and other fast trains
- Ticket is part of the semester fee!
- FAQ & Installation:



OVGU `Survival Kit`

Examinations



MIND Deadlines

All year round:
Check your emails
regularly



Registration
period
(IMPORTANT!):
November 15st
-
November 30th



semester break:

Depends
(March, August)



EXAMS:

FEBRUARY
3 2024
-
February 22
2024

FEM Students organizations

SIMP-SON – networking events, buddy program, cultural exchange

FaraWiwi – The Student Council of the Faculty of Economics

International Club of FEM -

SBM – Student Stock Exchange Association Magdeburg

ENACTUS – largest student entrepreneurship initiative in the world



Important **THINGS** to know

Immatrikulationsbescheinigung – Certificate of enrollment

myOVGU – study related documents

Prüfungsamt – Examination Office (each Faculty has their own)

Sickness – stay at home

WiSe / SoSe - Winter and Summer semester

Matrikelnummer – Matriculation number, student ID



USEFUL APPS FOR STUDENTS



Welcome to OVGU

Tien Do Nam

4.5 ★

17 reviews ⓘ

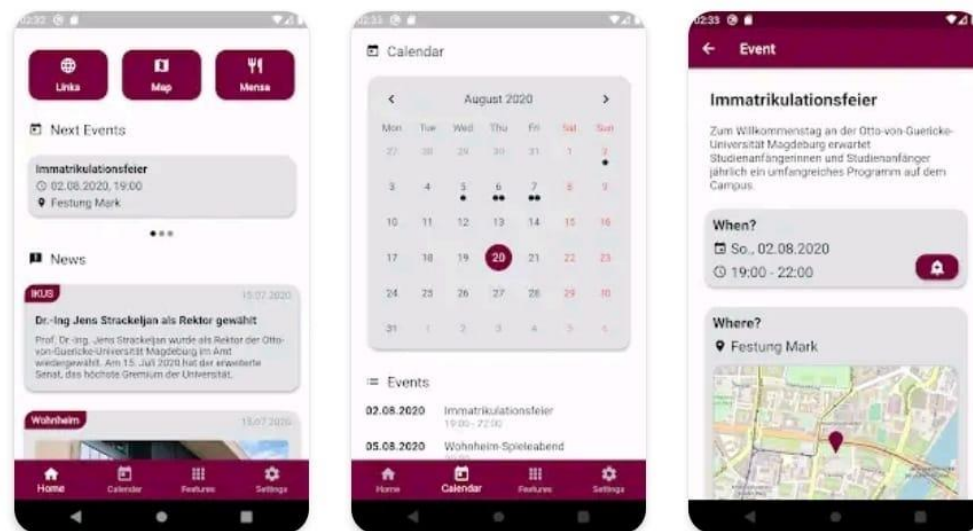
1K+

Downloads



USK: All ages ⓘ

Install



UNiDAYS: Student Shopping App

UNiDAYS

Uninstall

Open

4.4 ★

11K reviews ⓘ

1M+

Downloads



USK: Ages 12+ ⓘ



UniNow

UniNow GmbH

In-app purchases

Uninstall

Open

4.0 ★

2K reviews ⓘ

100K+

Downloads



USK: All ages ⓘ



SIMP-SON Events

What we plan Events, like ...

- * Trip through Saxony-Anhalt (WiSe/SoSe)
- BBQ
- Christmas Party (06.12)
- Christmas Ounch and BBQ for SIMP-SON Buddies (18.12. by invitation)
- FEM's International Lunch (22.11.)
- Study Group Start Support





DOWNLOAD

OUR EVENT PLAN `24:



31.10.	Shops, groceries, institutions are closed	Official Holiday
08.11., Friday 16:00 – 18:00	building 32, IBZ, Conference Room	SIMP-SON's Info Event II: Student Organizations at OVGU, Study Group Kick-Off Registration: isp@ovgu.de
13.11., Wednesday	15:15 – 17:00 <i>in front of Domplatz 1</i>	SIMP-SON's Regional Info Session Guided Tour through the Parliament of Saxony-Anhalt Registration: isp@ovgu.de
22 .11., Friday 13:00 – 14:00	building 22, A128 & 129	FEM's International Lunch Hour Registration: isp@ovgu.de
December 01. -24.12.	Instagram	SIMP-SON's Christmas Calendar <i>traditions, quizzes, and more fun</i>
06.12., Friday 18:30 – 21:30	Campus Theater	SIMP-SON's International Christmas Event for FEM students Registration: isp@ovgu.de



International club



What is it about? → Integration @ OVGU in Magdeburg

Discuss problems/issues that you face in international student life and find the solutions. Make an impact on the international campus life of OVGU

Where?

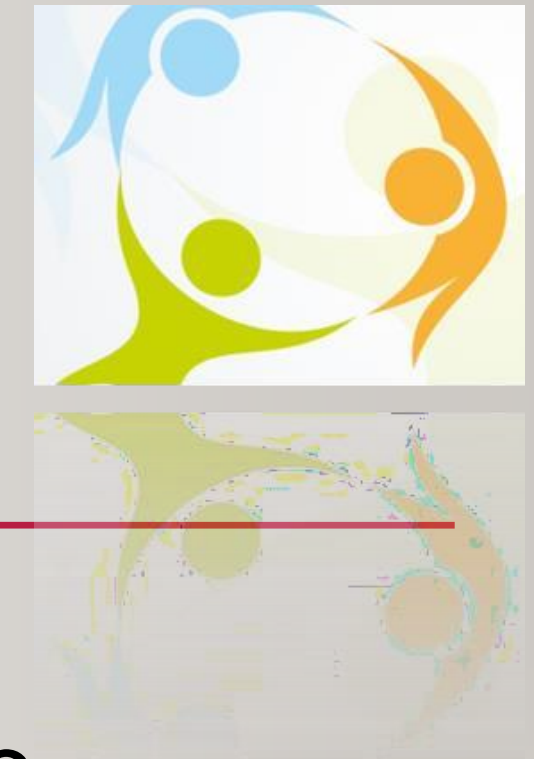
Unitheke or in G22, room A-128



When?

Every 2nd Thursday of the month at 17:00 (**next meeting 14.11./ 12.12., ...**)

What about you...



Do you have an **idea** for the student networking/educational event?

Do you want to **make a change** at the university but do not know how?

Then write an email to the isp@ovgu.de and **SIMP-SON team will help you** to fulfil your idea

Important Links



- [Isp.ovgu.de](http://isp.ovgu.de) → Newsletter, Welcome Hall, etc.
- Library book search link: <https://www.ub.ovgu.de/Literatursuche.html> (then click on Bibliothekskatalog (OPAC))
- Sprachzentrum (language courses) <http://www.sprz.ovgu.de/Fremdsprachen/Deutsch+als+Fremdsprache.html>
- Sports registration: <https://www.spoz.ovgu.de/>
- LSF: <https://lsf.ovgu.de/qislsf/rds?state=user&type=0>
- MVB transportation (schedules and routes): <https://www.mvbnet.de/>
- International students club: <https://www.ikus.ovgu.de/>

**Thank you for your
attention!**



<https://i.pining.com/564x/8a/89/e2/8a89e20255bf9c1fd19c6d8e4b8fdb23.jpg>